

$E < K \quad G < 0$

$E > K_{var} \quad \checkmark$

$E - K_{var} = DB$

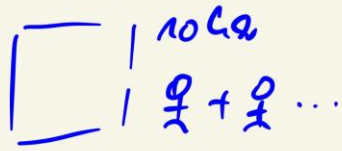
$EY = K_{var}$

Betriebsrentenlinie

∩

* Politikbewertung

Ertragsfestsatz



KKG (SME)

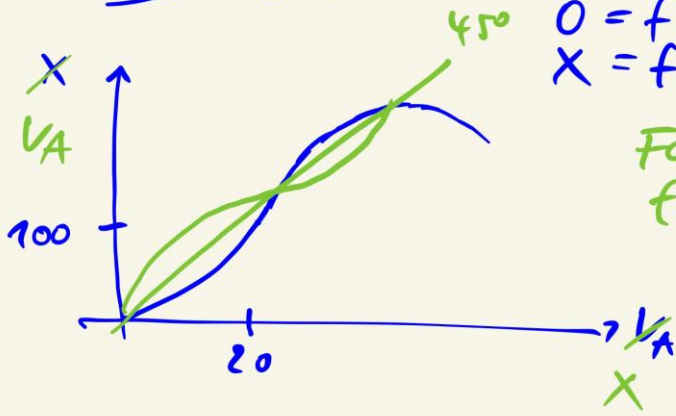
Produktionsfunktion

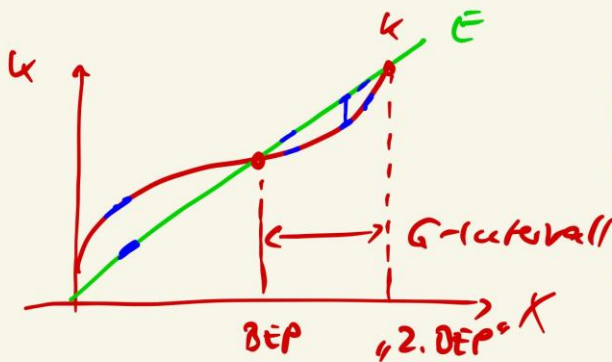
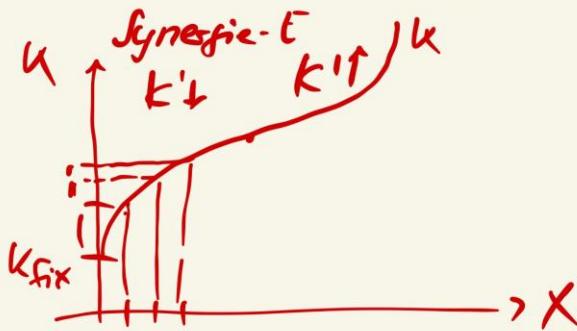
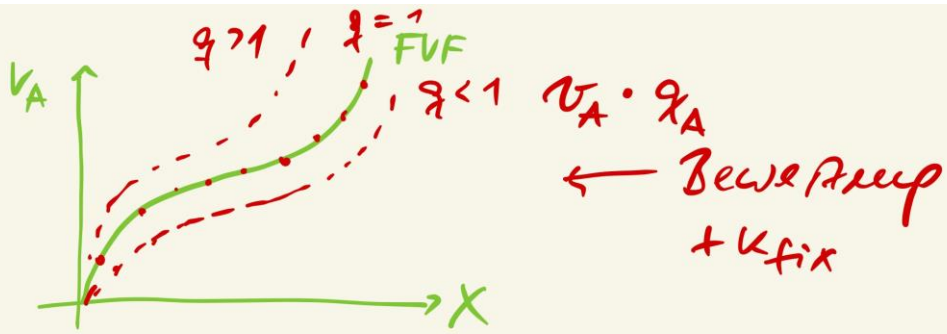
$Q = f(I)$

$X = f(v_A)$



Faktorverbrauchs-
funktion

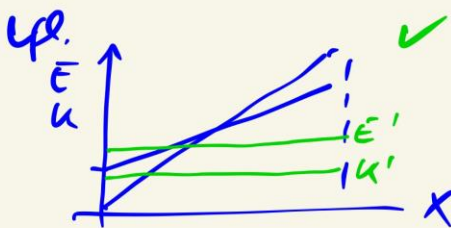




G_{max}

(1) $K' = E'$

(2) $\forall X$ mit $E > K$

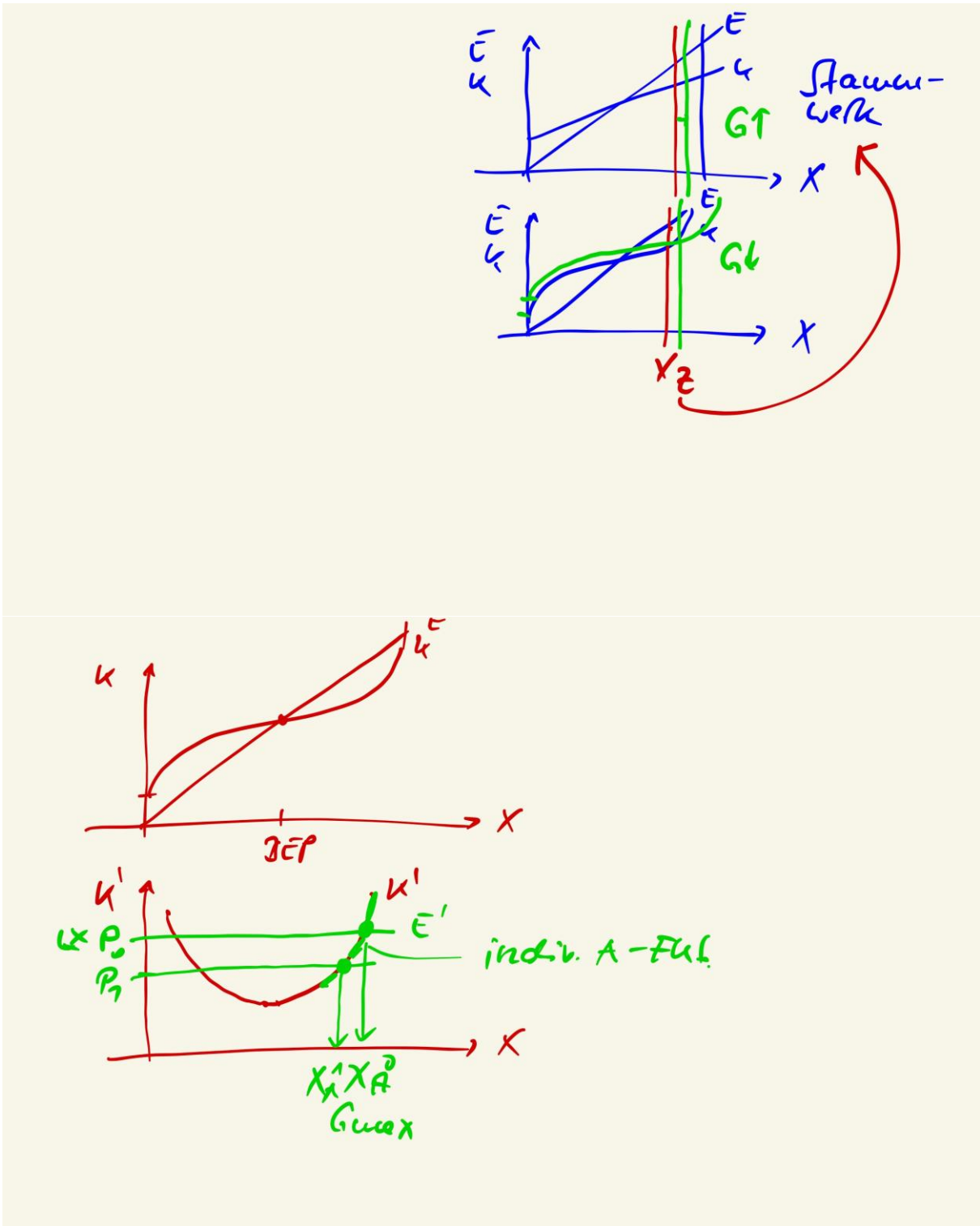


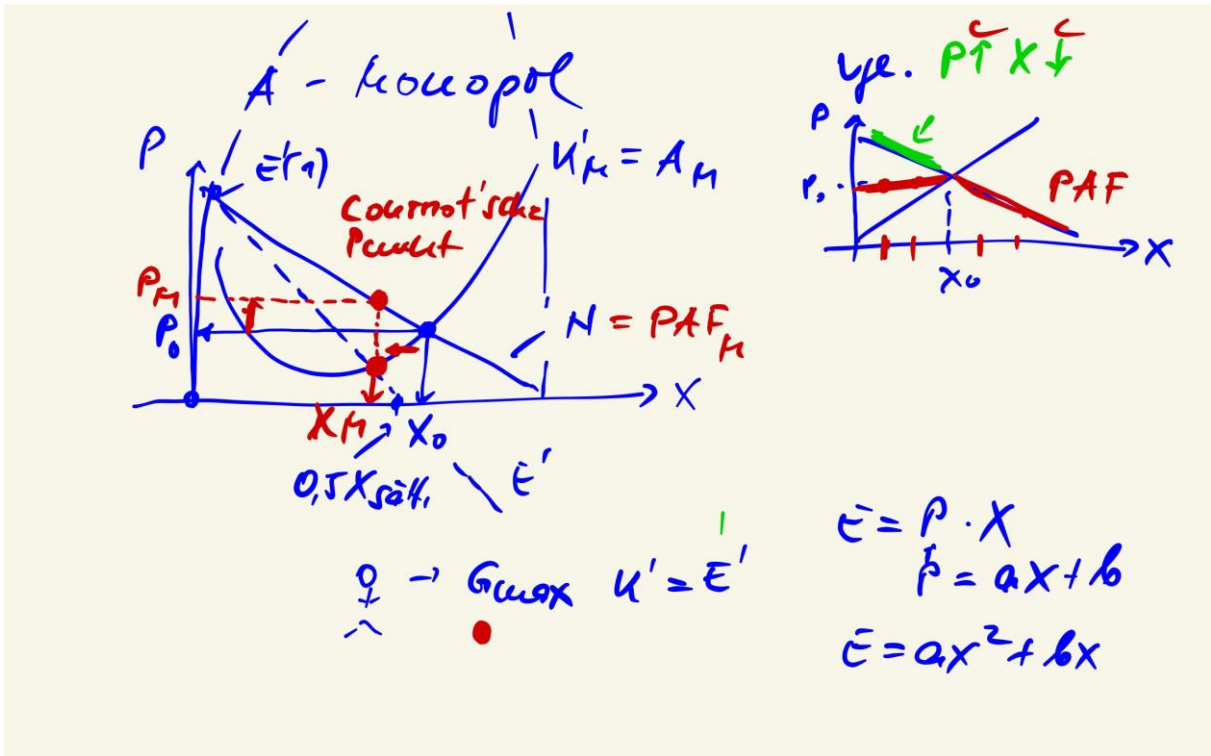
$K_{W1} 100000 \text{ €}, E > K$

$K_{W2} + 10000 \text{ €}, \Delta E > \Delta K$

$K_{W3} + 10000 \text{ €}, \Delta E = \Delta K$

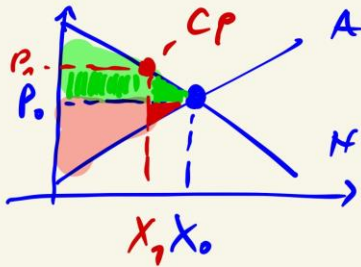
☺





*

Bewertung



$P \uparrow$ $X \downarrow$ γ^{real}
 \ominus \ominus \ominus

KR \uparrow PR
 Tribut des Kons. an
 Monopol

\blacktriangle KR - Verlust \ominus
 \blacktriangledown PR - Verlust \ominus

- \oplus Aufbau, Umkehr
 von Merkel
- \oplus Fo / E \rightarrow Patente
- \oplus Klausur P 75